



Pilot valves

E1 **SR Series**

E2 **LD Series**

HOW TO ORDER

PILOT VALVE FOR PULSE VALVE

Designed for panel mounting or Turbo boxes. Two models are available:

- **Series SR, max. length of pilot tubes 3m**
- **Series LD, max. length of pilot tubes 10m**

Two ways normally closed. Tubes 6 or 8 mm. diameter should be used for pneumatic connections to the pulse valves.

HOW TO ORDER

example

SRM

02450

SRC : PILOT VALVE WITH CONNECTOR
SRM : PILOT VALVE SCREWS TERMINAL
LDC : PILOT VALVE WITH CONNECTOR
LDM : PILOT VALVE SCREWS TERMINAL

VOLTAGE

24V 50-60Hz= 02450
 110V 50-60Hz= 11050
 220V 50-60Hz= 22050
 24VDC = 024DC

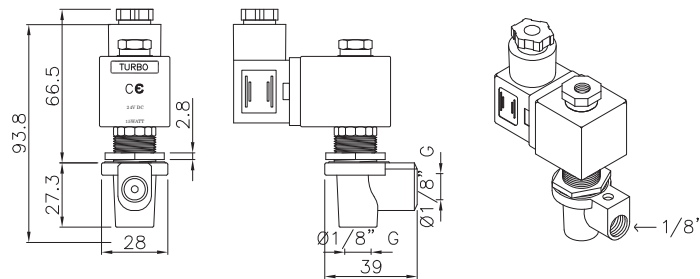
Code **SRM02450** is for pilot valve with screws terminal (**SRM**) power supply 24V 50Hz (**02450**).



CHARACTERISTICS

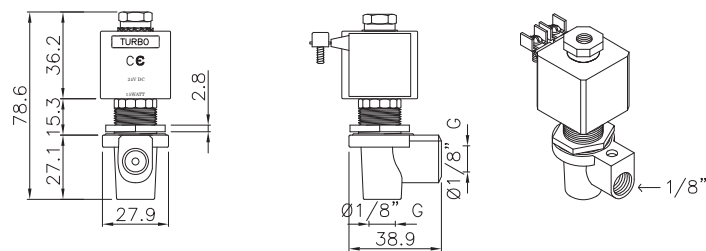
Fluid	Filtered and oilfree compressed air
Operating pressure	min. 0,5; max 7,5 bar
Temperature range	-20°C +80°C
Body	Brass
Core tube	Stainless Steel
Plunger	Stainless Steel
Coil insulation	Class H
Connector	PG9 / IP 65
Standard voltages	230 -110 - 24V/50-60VHz (19 VA) 24VDC (15W)

**SRC
IP65**

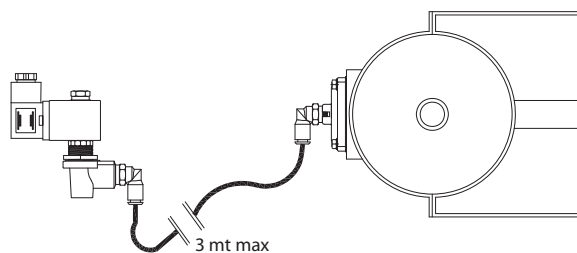


⊠ Available with ATEX coil zone 21 and zone 22

**SRM
IP00**

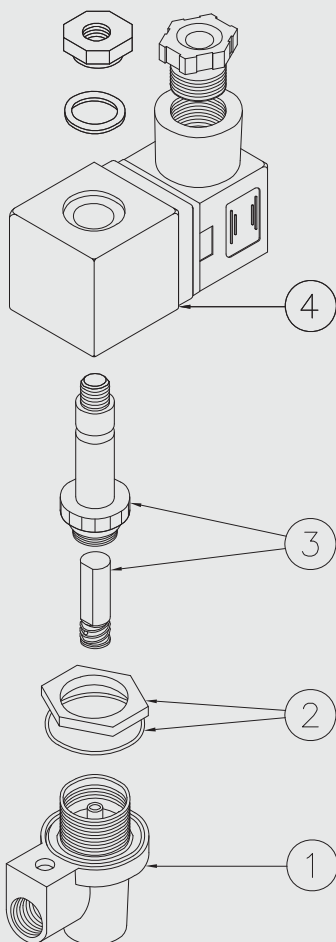


INSTALLATION



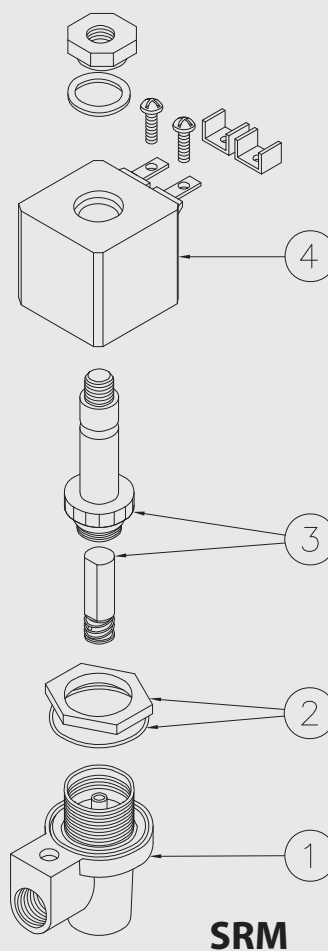
SR Series

SRC



DESCRIPTION	SRC
1 Body	PCRP
2 Lock nut + O-ring	TGHIERA 18x1 + OR3081
3 Pole assembly	GPC10/R
4 Coil + connector	BH10

DESCRIPTION	SRM
1 Body	PCRP
2 Lock nut + O-ring	TGHIERA 18x1 + OR3081
3 Pole assembly	GPC10/R
4 Coil	BH10-A9



SRM

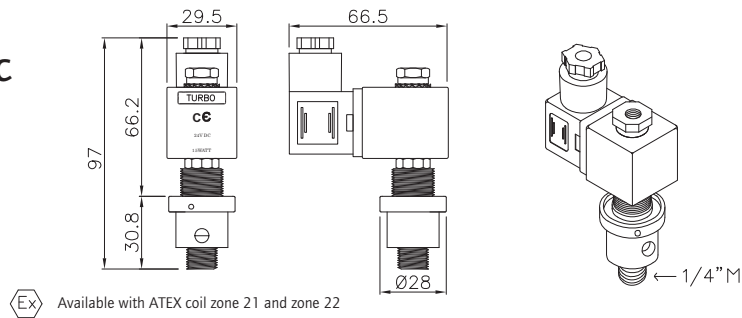
Long distance operation **LD** Series



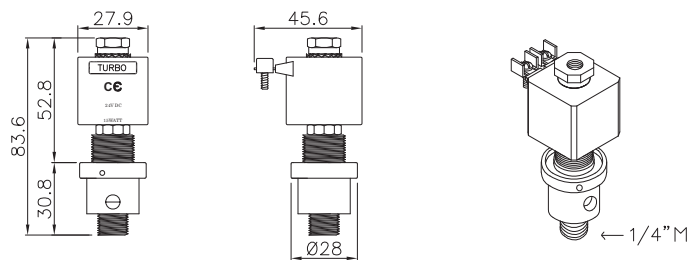
CHARACTERISTICS

Fluid	Filtered and oilfree compressed air
Operating pressure	min. 0,5; max 7,5 bar
Temperature range	-20°C +80°C
Body	Brass
Core tube	Stainless Steel
Plunger	Stainless Steel
Coil insulation	Class H
Connector	PG9 / IP 65
Standard voltages	230 -110 - 24V/50-60VHz (19 VA) 24VDC (15W)

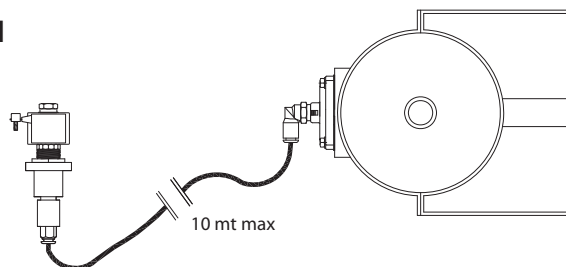
LDC



LDM

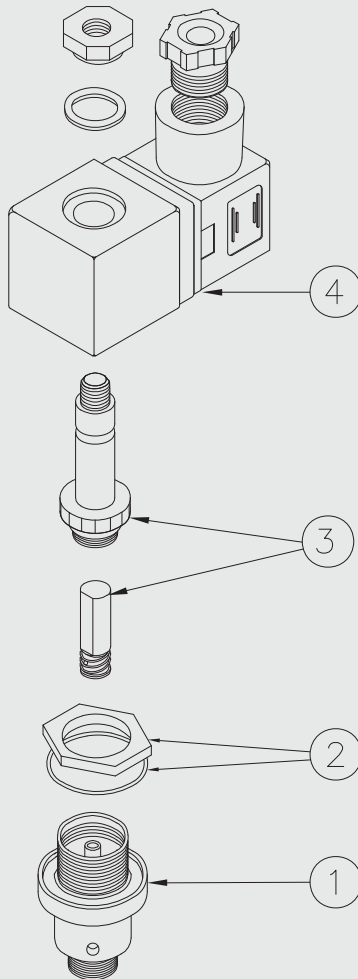


INSTALLATION



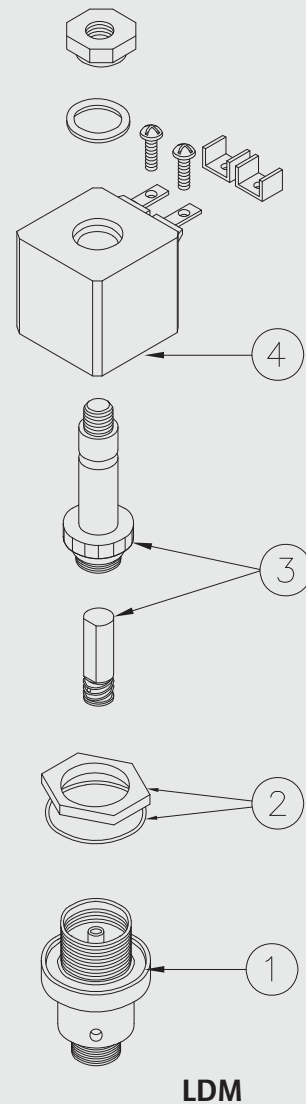
LD Series LONG DISTANCE OPERATION

LDC



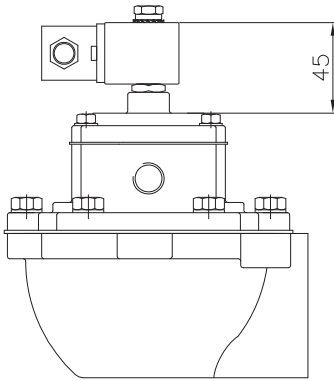
DESCRIPTION	LDM
1 Body	PCRLD
2 Lock nut + O-ring	TGHIERA18x1+OR3071
2 Pole assembly	GPC10/R
3 Coil + connector	BH10

DESCRIPTION	LDM
1 Body	PCRLD
2 Lock nut + O-ring	TGHIERA18x1+OR3071
3 Pole assembly	GPC10/R
4 Coil + connector	BH10-A9



LDM

ATEX

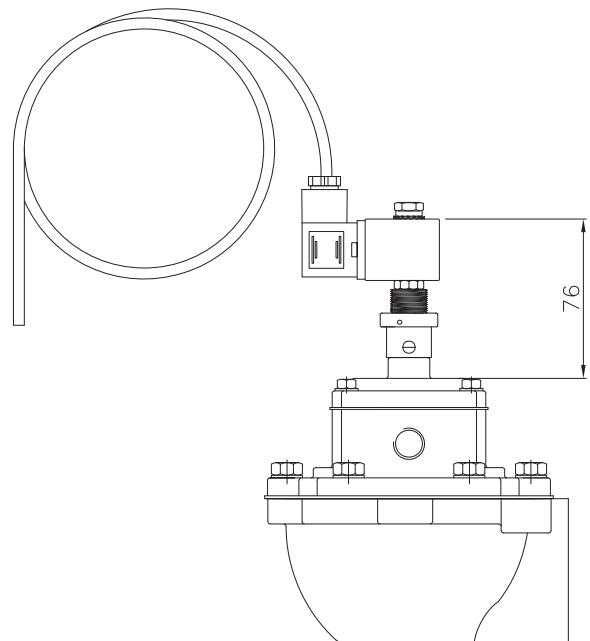


ATEX II3GD (zone 2 e 22)

Turbo pulse valves for potentially explosive atmospheres according to ATEX 94/9/EC valve is provided with moulded coil and connector IP 65 suitable for zone 2 e 22. Valve dimensions are same of standard model.



Turbo pulse valves for potentially explosive atmospheres according to ATEX 94/9/EC. Valve use encapsulated moulded soil with leads wire of different length. Pilot valve has brass body that change valve dimensions from standard model.



ATEX II2GD (zone 1 e 21)

ATEX 94/9/EC

Correspondence between zones and categories

Group I (underground mining, methane and combustible dust)		Group II (Surface, gas/air or mixture of dust/air, vapors)					
Category M		Category 1		Category 2		Category 3	
1	2	G (Gases, Mists vapors Zone 0)	D (Dust Zone 20)	G (Gases, mists vapors Zone 1)	D (Dust Zone 21)	G (Gases, mists vapors Zone 2)	D (Dust Zone 22)
Equipments ensuring a very high level of protection. Guaranteed operations in case of possible errors		Equipments ensuring a very high level of protection. Equipments ensuring a very high level of protection. Explosive atmospheres are present continuously, for long period or frequently.		Equipments ensuring a high level of protection. Explosive atmospheres are likely to occur.		Equipments ensuring a normal level of protection. Explosive atmospheres are unlikely to occur or, if they do occur, are likely to do so only infrequently and for a short period only.	